



## THE PRESIDENTS SERIES

# Truman

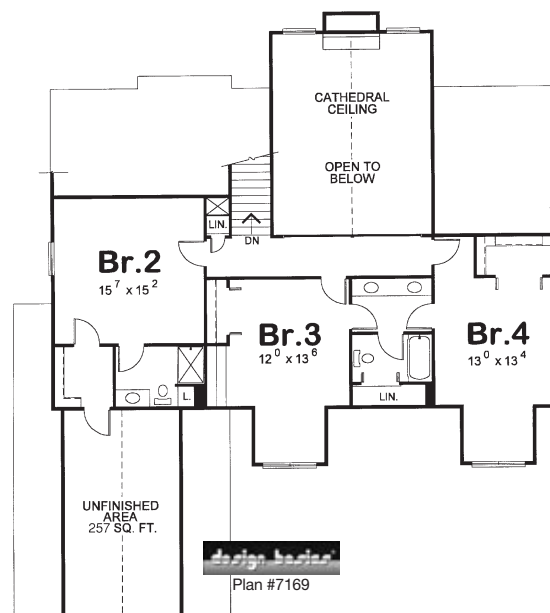
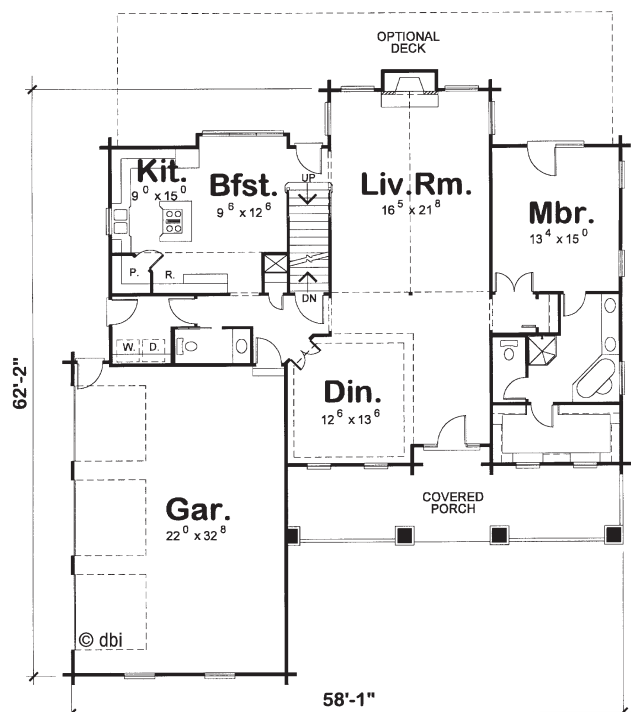
4 Bedrooms, 3½ Bathrooms  
Three-car garage

Main Level: 1,747 sq. ft.  
Second Level: 1,098 sq. ft.  
Total: 2,845 sq. ft.

The large living room, with cathedral ceilings and gable glass, is at the center of this remarkable floorplan. The home also includes an eat-in kitchen, formal dining room, 1st floor master suite, and 3-car garage with bonus room above.

### Presidents Series homes offer:

- Innovative styling from Design Basics.
- Premium materials and components.
- Custom modifications and engineering.
- Complete weather-tight materials package.



THE ORIGINAL  
**Lincoln Logs**®  
LTD.

(800) 833-2461, [www.lincolnlogs.com](http://www.lincolnlogs.com)

© 2004 Lincoln Logs Ltd. Drawings and renderings are the artist's conceptions and may vary from the actual building plans. © Design Basics Floorplans