

Superior Quality. Exceptional Service.

Welcome to the *Original* Lincoln Logs.



Warmth. Style. Beauty.

These are the qualities of a finely crafted home.

These are the standards by which every

Lincoln Logs home is measured.

For nearly three decades, the folks at Lincoln Logs have been helping families create homes of enduring warmth and beauty. From cozy cottages to grand lodges, we produce log, traditional, cedar, and timber frame homes of uncommon quality. With nearly 10,000 homes built worldwide, our homes continue to stand the test of time.

Our homes are designed to match the personalities of the individuals who live



in them. By carefully listening to your ideas and blending those with our design expertise, we'll work with you to create a home that perfectly reflects your lifestyle. And,

since every Lincoln Logs home is certified by a licensed on-staff engineer, your home will be designed and built to last for generations.

By combining superior building materials, a wide range of options and styles, cutting-edge design, and personalized service, Lincoln Logs has become a leader in the custom home industry.

We invite you to learn more about the Lincoln Logs advantage, and how we can help you find and build the home of your dreams.



"Every time we turn into our driveway we just lose the stress and feel like we are truly on vacation in our peaceful retreat."

– Dave, Debbie, and "Holly" the dog.



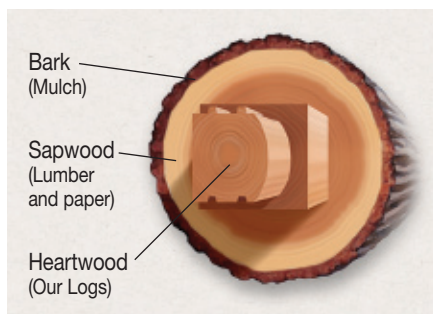
A Better Home From the Heart of the Wood.

It takes premium materials to build a truly premium home.

Why the best logs for building a quality home come from the heart of the wood.

Our Eastern White Pine comes from large-diameter logs harvested from managed northern forests.

First, lumber is cut from the outer sections of the log (the sapwood) leaving the boxed heart center – the most stable part of the tree. These heart logs are then slowly seasoned and stabilized before being milled. This process allows us to produce truly outstanding homes that age gracefully with minimal settling.



Every part of every tree used in the manufacture of our log homes is utilized – from the bark to the saw dust. There is virtually no waste.



The heart of the tree is where you find the best wood for log homes.

The heartwood is the driest, most stable part of the tree. It is less susceptible to shrinking and more resistant to insects and decay. All of

the logs in Lincoln's white pine log homes come from the boxed heart of the tree.

Our Logs

Eastern White Pine is considered the premier eastern wood for log home construction. With a tight grain and few knots, this beautiful wood is easy to dry and maintain. Only the finest northern grown heartwood logs are used in our homes. These are selected for their stability and graded by Timber Products Inspection to a minimum standard of TPI-53. (See sidebar.)

For our Swedish Cope homes Lincoln offers a selection of western woods, such as Douglas Fir and

Lodgepole Pine. These are harvested from high altitudes and dried slowly for up to ten years. Or, we offer Western Red Cedar – prized for its rustic beauty, decay resistance and longevity.

Other Materials

We don't stop with the logs. Other key building components include Vetter premium aluminum-clad windows and patio doors, Oakcraft stainable fiberglass entrance doors, and Owens-Corning architectural shingles – each considered among the best in their class. In fact, all structural materials, from floor joists to roof structure, are specified by an engineer who certifies the plans for every Lincoln Logs home. This ensures that your home will be as safe and sound as it is beautiful.

Lincoln puts more into your home than most other companies. The results are homes that will stay warm, strong, and beautiful for generations.





The perfect blend of design, style, and quality.





More Options. More Choices.

Lincoln Logs building systems.

Log Styles:

- D-Log
- Round/Round
- Square Log
- Weatherbloc® Clapboard
- Swedish Cope
- Handcrafted

Log Finishes:

Milled, Rustic, Hewn

Log Corner Styles:

Notch & Pass, Saddle Notch, Dovetail, Corner Post, Corner Boards

Log Species:

Eastern White Pine, Western Red Cedar, Douglas Fir, Lodgepole Pine, Englemann Spruce



Lincoln Logs started with log homes. Today, we are one of the largest and most respected log home producers in the industry. But, we offer much more. Our traditionally-framed homes and timber frame homes offer the same attention to detail, yet present entirely different approaches to design, style and construction. This flexibility and the ability to 'mix and match' elements from each of these styles sets Lincoln Logs in a class by ourselves.

Log Homes

Lincoln Logs offers over 80 combinations of log profiles, sizes, finishes and corner systems. So, whatever style you want, Lincoln has it. (See Sidebar.)

Insulated Log and Traditional Homes

For those that want the flexibility of a more conventional home, Lincoln's traditional packages offer the perfect solution. 2x6 wall panels are pre-built in our factory to assemble quickly on site. Our super-insulated Thermo-Home® offers an R-28 energy rating and comes with pre-installed foam insulation and 1x9 T&G pine interior

wall covering. Choose any style of log or conventional siding for the exterior, and mix and match your interior wall covering room by room. Other insulation choices are available.

Timber Frame Homes

Blending old world craftsmanship with cutting-edge architecture, our Timber Frame homes set new standards for form, structure, and style. Massive timbers, precision joinery, and open spans complement these stunning homes. Contact your Lincoln Logs representative for more information.

Lincoln Solariums

Let the light in, take advantage of that gorgeous view, or add year-round garden space. We custom manufacture these exquisite rooms in three styles to match our log homes, traditional homes, or your existing home.

Lincoln Cedar Homes

Featuring the beauty of Western Red Cedar siding and trim, these traditionally framed homes offer extraordinary styling. Choose from a wide variety of options and finish materials to make your home uniquely yours.

Corner Styles and Building Systems



Notch-and-Pass



Swedish Cope



Thermo-Home®
(Panelized Building System)



Corner Post



Corner Board



Dovetail

Log Profiles



D-Log



Round/Round



Weatherbloc®
4° Bevel



Weatherbloc®
8° Bevel



8" Square



12" Square



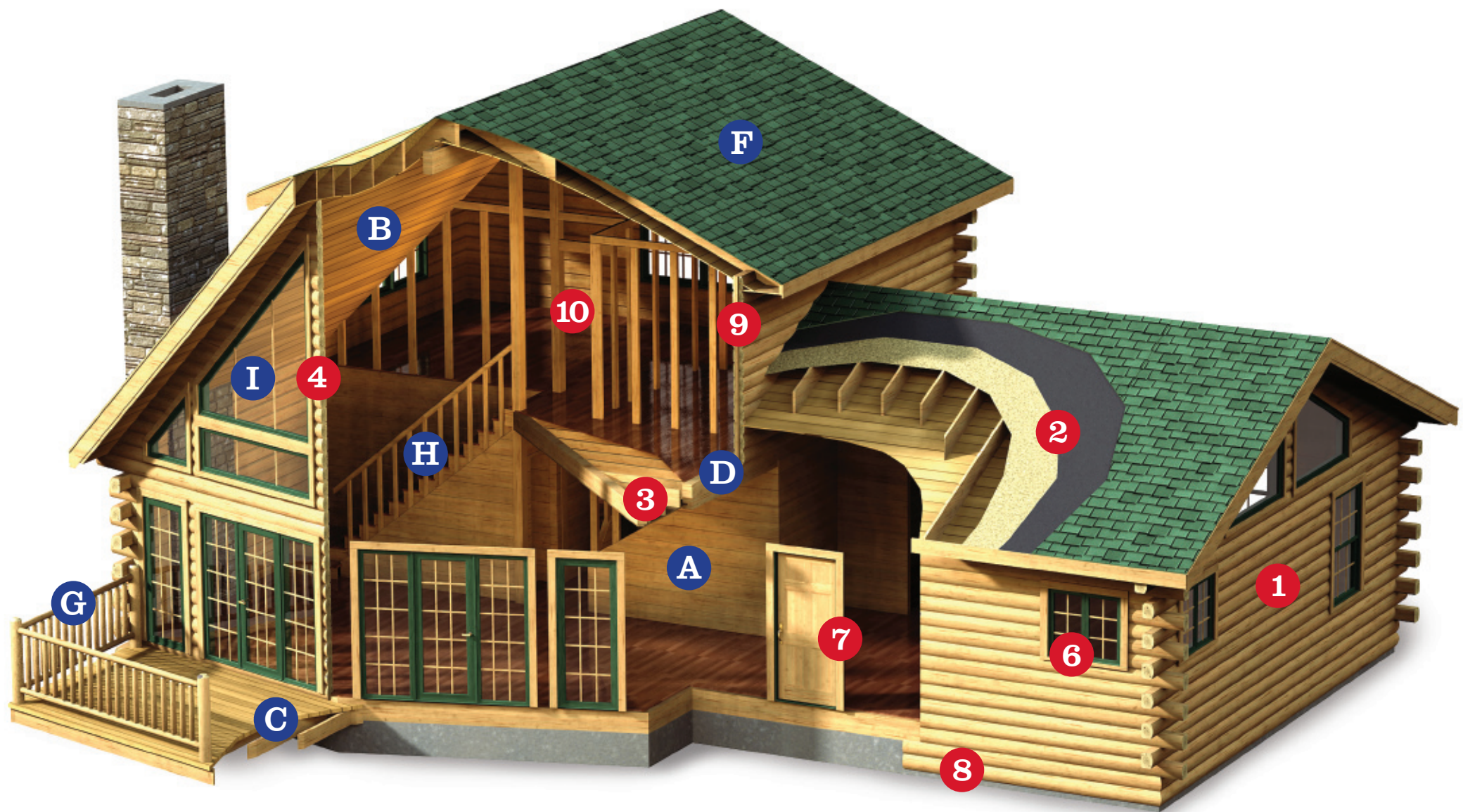
Swedish Cope



Cabin "D"

"No better building material exists than Nature's gift of solid wood."





● Standard Features ● Options



Better materials do make a better home. There is a difference.

Your Lincoln Logs Home From the Inside Out.

Standard Materials Package.



Lincoln Logs' standard package includes an extensive list of coordinating materials. Each has been chosen for its premium quality and compatibility with the style and structure of your home. The structural materials we include are specified for each home by a Lincoln Logs licensed engineer. So, you'll have the peace of mind that comes from knowing that your home will be built using the best materials. That's why Lincoln Logs can stand behind every home we produce.

● Standard Features:

1. Log or Panelized Exterior Walls – Many choices of full log and siding styles available. Log package includes splines, gaskets, caulking, lag screws.
2. Roof System
 - Rafters or trusses, per plans and code requirements. (Options: Log rafters or purlins; timber rafters or purlins.)
 - 5/8" OSB roof sheathing, pine facias, 1x6 T&G soffits.
 - 30# roofing felt, ridge and soffit vents, ice and water barrier.
 - Owens Corning Pro-30 Class A fire rated fiberglass architectural shingles.
3. Second Floor System – 2x joists with 3/4" OSB decking.
4. Gables
 - 2x6 framing w/OSB sheathing and log siding exterior.
 - 1x9 T&G White Pine interior.
5. Porch Materials (included with some models) - Posts, beams, roof system, 1x6 T&G White Pine ceilings,

Cedar decking and railing, pressure-treated floor framing. (Options: Evergrain® decking and railing.)

6. Windows - Vetter premium aluminum-clad windows with Low-E insulated glass, grills, screens, extended jambs, jamb liners, 5/4" exterior casing, head flashing, 2x6 bucks.
7. Exterior Doors - Fully insulated and weather-stripped fiberglass entrance doors; Vetter® aluminum-clad premium patio doors; steel fire doors where required.
8. Log siding to cover exposed rim joists.
9. Dormers
 - 2x6 framing w/OSB sheathing, log siding exterior and 5/4 corner boards.
 - 1x9 T&G or profiled White Pine interior. (Option: Log corners.)
10. All 2x4 and 2x6 interior framing as per design.

● Options:

- A. 1x9 T&G Pine or Cedar for partition walls.
- B. 1x6 T&G Pine or Cedar for cathedral ceilings.
- C. Complete deck packages: Cedar or Evergrain®.
- D. Log or Post and Beam 2nd floor system.
- E. Timber Frame systems.
- F. 50-year architectural shingles.
- G. Log railings for porches, decks, and stairs.
- H. Log staircases.
- I. Fixed glass packages.
- J. Garages, solariums, and additions.
- K. Board & Batton, clapboard, and many other styles of gable and dormer siding.
- L. Many other custom options available upon request.



Quality By Design.

Choose the Lincoln Logs difference.



Three more reasons you can trust Lincoln Logs.

- 1. Lincoln Logs is a charter member of the Log Homes Council, a governing agency for the log home industry, and subscribes to their written standards of quality and ethics.*
- 2. Our logs are inspected by an outside agency, Timber Products Inspections, Inc., to guarantee that only the finest log materials go into our homes.*
- 3. Lincoln employs a staff engineers to review and certify the plans for every home we produce and deliver.*



Now that you've seen all the product choices Lincoln Logs has to offer, the next step is to develop a floorplan that meets your needs, taste, and lifestyle.

There is no one 'perfect plan' that fits everyone. That's why Lincoln Logs has over 150 standard plans. Each of these can be modified and adjusted to suit your needs. Of course, if you have your own design in mind, we'll work from that.

Many of our homeowners begin by using these plans as a starting point for gathering ideas. Then, with the help of your Lincoln Logs Authorized Representative and our design department, your ideas are compiled into a workable, livable floorplan. When every detail meets your approval, final plans are then sent to our in-house engineering department for review and certification.



Included here are some of our more popular floorplans to get you started. More plans can be found on our website, www.lincolnlogs.com. If you don't see what you're looking for, ask us; we're sure to have something close to what you've got in mind. And, if we don't, we'll sit down with you, listen to your ideas, and start sketching. The important thing is that you get exactly the home you want.

Your Lincoln Logs Authorized Representative can show you additional plans from our portfolio, including custom homes not published. They'll assist you through the planning and construction of your home, help you find experienced builders and contractors, or even put you in touch with log home mortgage specialists. And, they are backed by the strongest support network in the industry. So, whatever your needs, call us. We're here to help you get the home of your dreams.