



THE PRESIDENTS SERIES

Pierce

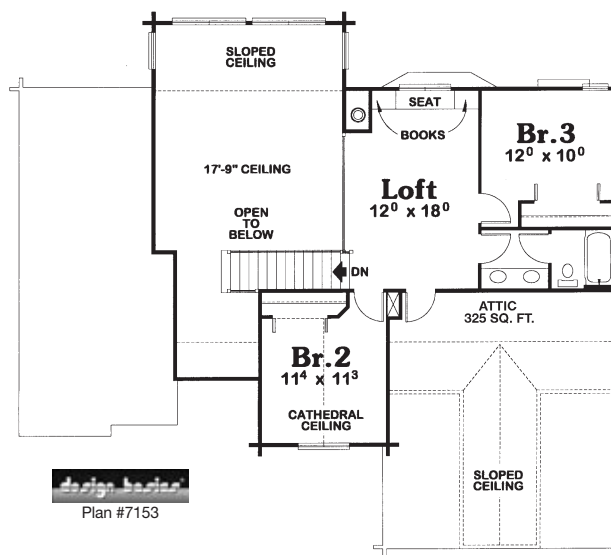
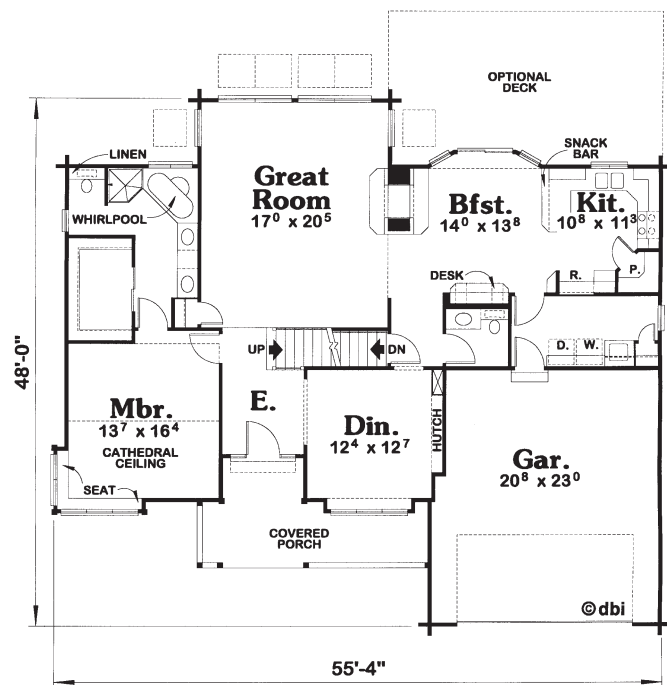
3 Bedrooms, 2½ Bathrooms
Two-car garage

Main Level: 1,546 sq. ft.
Second Level: 605 sq. ft.
Total: 2,151 sq. ft.

Open and airy, the interior of this home is filled with natural light from expansive fixed glass, windows and transoms. The first floor master suite includes window seats to take advantage of sun and views. Upstairs are two more bedrooms and an open loft. Also included is a large entrance porch and 2-car garage. A rear deck is shown as an option.

Presidents Series homes offer:

- Innovative styling from Design Basics.
- Premium materials and components.
- Custom modifications and engineering.
- Complete weather-tight materials package.



THE ORIGINAL
Lincoln Logs[®]
LTD.

(800) 833-2461, www.lincolnlogs.com

© 2004 Lincoln Logs Ltd. Drawings and renderings are the artist's conceptions and may vary from the actual building plans. © Design Basics Floorplans