



THE PRESIDENTS SERIES

Johnson

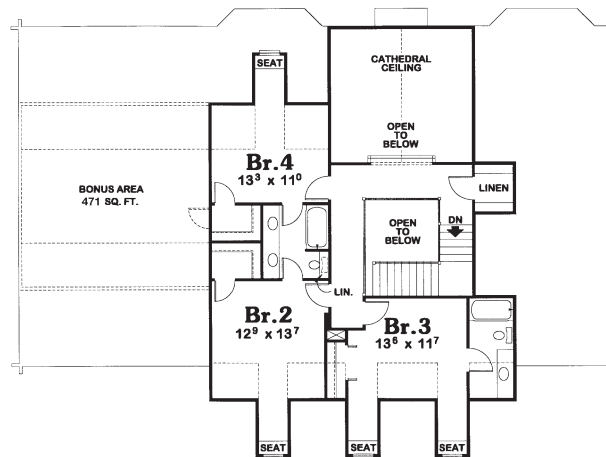
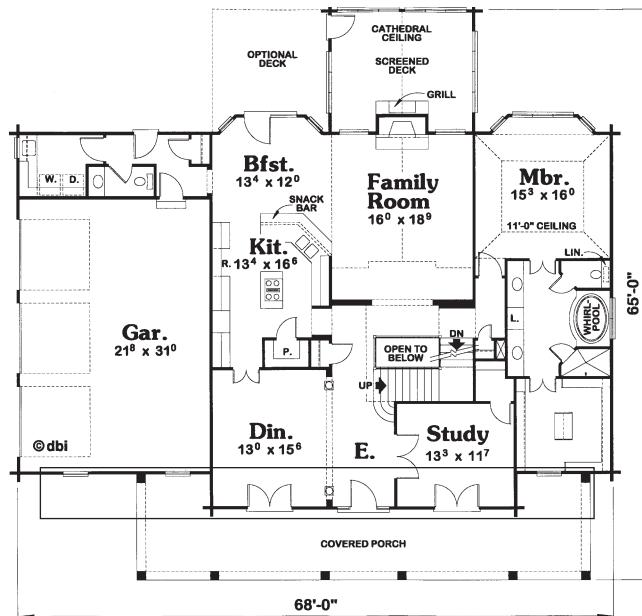
4 Bedrooms, 3½ Bathrooms
Three-car garage

Main Level: 2,157 sq. ft.
Second Level: 981 sq. ft.
Total: 3,138 sq. ft.

Four bedrooms plus a private study give this home plenty of room for family, while the open family room, formal dining area and front and rear porches provide room for entertaining. Large closets and a 3-car garage provide storage space, and the transom windows let in natural light.

Presidents Series homes offer:

- Innovative styling from Design Basics.
- Premium materials and components.
- Custom modifications and engineering.
- Complete weather-tight materials package.



PLAN #7155

THE ORIGINAL
Lincoln Logs®
LTD.

(800) 833-2461, www.lincolnlogs.com

© 2004 Lincoln Logs Ltd. Drawings and renderings are the artist's conceptions and may vary from the actual building plans. © Design Basics Floorplans