



## THE PRESIDENTS SERIES

# Jackson

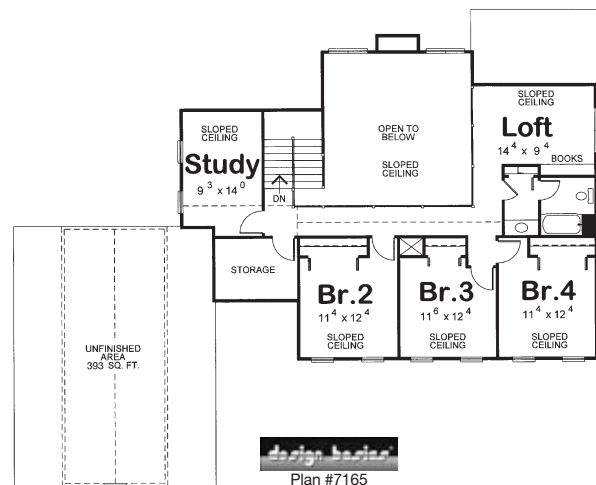
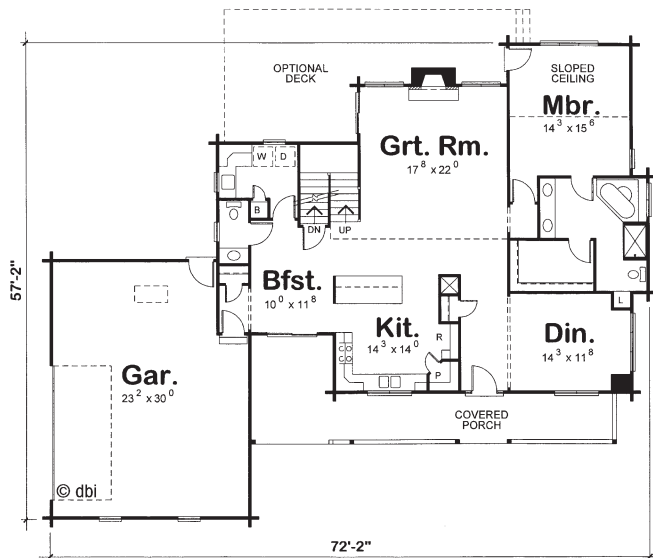
4 Bedrooms, 2½ Bathrooms  
Two-car garage with workshop

Main Level: 1,750 sq. ft.  
Second Level: 1,080 sq. ft.  
Total: 2,830 sq. ft.

Everyone likes to gather in the kitchen, and that's what this home was designed for. The generous first floor master suite features a private access to a rear porch, deck, or patio. Upstairs are three more bedrooms, plus a study, open loft and bonus room above the garage.

### Presidents Series homes offer:

- Innovative styling from Design Basics.
- Premium materials and components.
- Custom modifications and engineering.
- Complete weather-tight materials package.



THE ORIGINAL  
**Lincoln Logs**®  
LTD.

(800) 833-2461, [www.lincolnlogs.com](http://www.lincolnlogs.com)

© 2004 Lincoln Logs Ltd. Drawings and renderings are the artist's conceptions and may vary from the actual building plans. © Design Basics Floorplans