



THE PRESIDENTS SERIES

Hayes

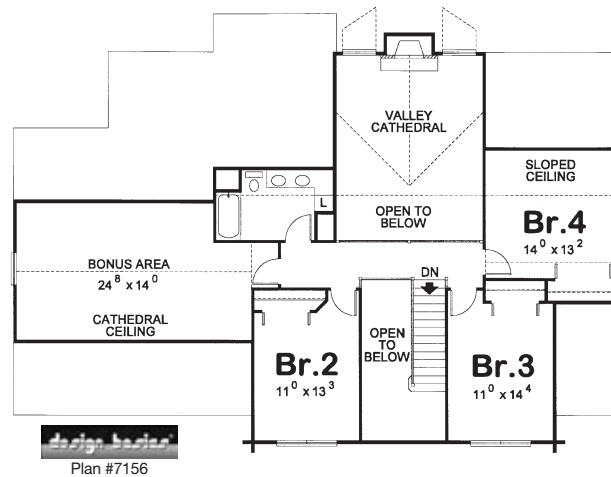
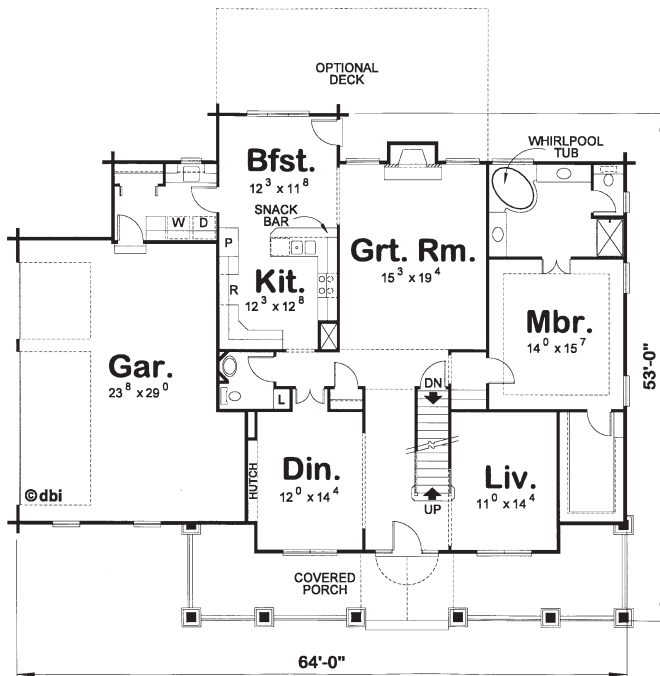
4 Bedrooms, 2½ Bathrooms
Three-car Garage

Main Level: 1,864 sq. ft.
Second Level: 799 sq. ft.
Total: 2,663 sq. ft.

This 2-story colonial design features a generous first floor master suite. Above are three additional bedrooms plus a multi-purpose bonus room. Formal living and dining areas, a large great room and a cozy breakfast nook take care of family and friends in comfort and style. Included is a 3-car garage.

Presidents Series homes offer:

- Innovative styling from Design Basics.
- Premium materials and components.
- Custom modifications and engineering.
- Complete weather-tight materials package.



THE ORIGINAL
Lincoln Logs[®]
LTD.

(800) 833-2461, www.lincolnlogs.com

© 2004 Lincoln Logs Ltd. Drawings and renderings are the artist's conceptions and may vary from the actual building plans. © Design Basics Floorplans