

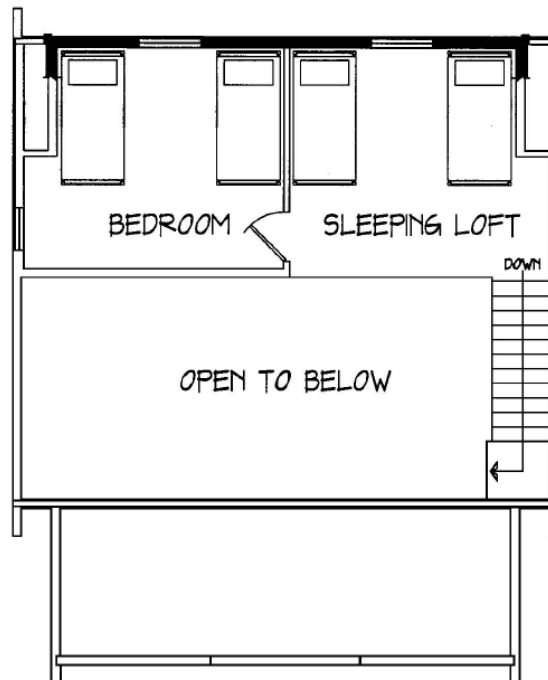
# The Elk Pond

## 988 Sq. Ft.

2 Bedrooms with Sleeping Loft  
Spacious Great Room

Main Level: 672 sf  
Second Level: 316 sf

The Perfect size for Everyone from the Avid Sportsman to the person Looking for a Welcoming Family Retreat.



- Seasoned Milled Eastern White Pine log
- Complete Weather-tight materials package.
- Aluminum Clad Windows
- Steel 9Lite Entry Door
- 18" Eaves and Gable Overhangs

 THE ORIGINAL  
**Lincoln Logs**®

(800) 833-2461, [www.lincolnlogs.com](http://www.lincolnlogs.com)  
©2013 Lincoln Logs. Drawings and Renderings are the Artists conceptions and may vary from the actual building plans.